



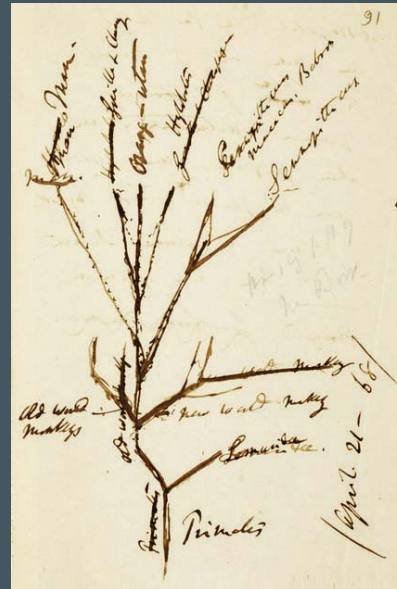
האקדמיה הלאומית הישראלית למדעים
المجمع الوطني الإسرائيلي للعلوم والآداب
THE ISRAEL ACADEMY OF SCIENCES AND HUMANITIES

The Fossil Trail: Evidence for Human Evolution

As soon as it was published, Charles Darwin's theory of evolution raised the obvious question: If, as the theory proposes, all living things are products of a chain of development from more primitive ancestors, could the same be true of humans? Darwin himself refrained from dealing with the sensitive issue of human origins, but scientists, certain that the theory of evolution must apply to humans as well, searched feverishly for proof.

The exhibition mounted at the Israel Academy of Sciences and Humanities presents to the public some of the discoveries that attest to human evolution: fossil remains, found in many locations, of various species of hominids that existed from millions to tens of thousands of years ago. They include the oldest hominid fossils known to us, discovered only recently, and fossils that have not yet been shown in public. Each item is accompanied by detailed information on the species to which it belongs and its importance in tracing the process of human development.

Also on display are photos of the reconstructions of fossil species by renowned *National Geographic* paleoartist John Gurche, including pictures illustrating his process of reconstructing their "soft" anatomy.



The Israel Academy of Sciences and Humanities

43 Jabotinsky St., Jerusalem

Exhibition opening hours:

Sunday–Thursday, 9:00–17:00

Reservations for guided

group visits: ziva@academy.ac.il



Details: www.academy.ac.il